



Te Taiiao Aotearoa 2022 Whakarāpopototanga

Te Kāhui Pūrongo Taiiao o Aotearoa



Ministry for the
Environment
Manatū Mō Te Taiiao

Stats ^{NZ}
Tatauranga Aotearoa

He mea whakaputa a *Taiao Aotearoa 2022* e te Manatū mo te Taiao me Tatauranga Aotearoa i runga anō i te Ture Pūrongorongo Taiao 2015. Ko tā te pūrongo nei ka tukua i ia toru tau, he whakahiato i ngā taunakitanga mō te āhua o te taiao e mau mai ana ki ngā pūrongo whaitua kua hua ake mai i te putanga o *Taiao Aotearoa 2019*. Kāore te pūrongo e tāpae urupare i te mea e ai ki te ture nāna i tuhia ai te pūrongo, kei waho kē tērā o tōna hōkaitanga. He whakarāpopototanga kau tēnei o te pūrongo nui.

► Ngā mea hou kei *Taiao Aotearoa 2022*

He tūhura tā *Taiao Aotearoa 2022* i te hiranga o te taiao i tō tātou oranga, tae atu ki te oranga tinana

E toru tau kua taka mai i tō mua atu pūrongo mō te taiao, ā, kāore he rerekētanga nui i ngā tohuine taiao. Heoi anō, kua rerekē te āhua o tā mātou tiroiro me tā mātou whakaemi i ngā taunakitanga.

Ko tā *Taiao Aotearoa 2022*, he titiro ki ngā panonitanga taiao i te horopaki o tō tātou oranga – oranga takitahi, ā-whānau, ā-hapori anō hoki. Kua whakakaongia ētahi taunakitanga matahuhua nō roto mai i te mātauranga Māori, i te mātauranga taiao, i te pūtaiao hauora me te taha ōhanga.

Ko tā te ahunga kōtuitui o tēnei pūrongo me tana arotahinga ki te oranga, he āwhina i a tātou ki te huritao i tō tātou hononga ki te taiao me ngā pānga o ā tātou mahi ki te taiao.

He kōkiri tonu tā te pūrongo i te noho mai o te mātauranga Māori ki ngā pūrongorongo mō te taiao

He wehenga rangahau hihiri tonu te rapa māramatanga mō te wāhi ki te mātauranga Māori hei taki i ngā pūrongo taiao. E mahi ana tēnei pūrongo kia tuawhiti ake te mōhio me pēhea te kōtuitui i ngā momo mātauranga rerekē ki ngā mahi pūrongorongo hei ngā rā e heke mai nei.

Mō *Taiao Aotearoa 2022*, kua tīkina atu Te Kāhui o Matariki hei tātai i ngā taunakitanga o te pūrongo. Koia tētahi o ngā tino tohu o te tau hou Māori. E whakanui ana i ngā mea kua riro me ngā awhero anō mō ngā rā kei tua i te awe māpara. E tohu ana ia whetū o te kāhui i tētahi hononga o te tangata ki te taiao. I runga i tēnei aro ki te ao Māori, kua mānawatia te haere kōtui o ngā wāhanga katoa o te taiao, tae atu ki te tangata. He tātai hoki hei tūhono i a tātou katoa ki te whenua nei, ki Aotearoa.

► Te noho ora me te hononga ki te taiao

Ka ora te taiao, ka ora te tangata

I *Taiao Aotearoa 2022*, he wāhanga tonu, he huānga tonu te tangata nō te taiao.

He rerekē tēnei mea te noho ora ki tēnā, ki tēnā o tātou. Waihoki, he matahuhua, he hurihuri anō hoki te āhua o tā tātou tautuhi, tā tātou titiro ki tō tātou hononga ki ērā atu hanga katoa o te ao tūroa.

I te mātauranga Māori, he āhua rite te kupu 'waiora' ki te noho ora. E mea ana kei te wai te oranga mō te tangata. E kitea ana i konei te hononga o te oranga o te tangata me te taiao.

He whakaemi tā *Taiao Aotearoa 2022* i ngā ariā matahuhua o te noho ora i te horopaki o te taiao. Māna e tuawhiti ake ai tō tātou mārama ki tō tātou tini hononga ki te taiao.

► Ngā kitenga matua mō te taiao me te noho ora

I te nohonga o te tini tāngata ki te mata o te whenua, kua rerekē te āhua o ngā mea e ngaro ana me ngā pēhanga ki ngā momo, ki ngā pūnaha hauropi anō (ko Pōhutukawa te whetū e tohu ana i ēnei āhuatanga). Ngaro atu ana he whakatupuranga, tukua iho ana he pānga ki te taiao. Ko ētahi, ko ngā pēhanga o te panoni me te whakangoto ake i te whakamahinga whenua, ko te parahanga, ko te whakapaunga i te rawa māori, ko te huri haere o te āhuarangi me ngā momo urutomo.

He tautoko tonu tā te whenua me te oneone (e tohua ana e Tupuānuku) i te ōhanga, i te whakatupunga kai, i tō tātou hauora anō. Ko ngā oneone kei te whakamatua i te rere o te taioa, o te tāhawa me te wai. He wā anō kāore i te eke te kounga o te oneone ki ngā keonga kua whakaritea, ka mutu kei te ngaro haere he whenua i te ngāhorohorotanga, i ngā whakawhanaketanga me te whakarikirikitanga o te whenua. I te takanga o te wā kua iti ake ngā whenua haumako e wātea ana mō te mahi māra me te whakatupu kararehe.

Ahu mai ai te kai, ngā rongoā me ngā rawa i te koirao kanorau me ngā pūnaha hauropi ki uta (e tohua ana e Tupuārangī). He painga taha hauora mō te tangata i te noho wātea mai o te ao tūroa me ngā whaitua matomato ki a ia.

Tērā ka heke te pōkaikaha, ka kaha ake te aro ki te mahi kei mua i te aroaro, ka pai ake anō hoki te hirikapo, me te maumahara. Heoi anō, kua whāiti, kua pāhikahika hoki te hora o ngā whaitua matomato, mātua rā i ngā tāone. I ngā tau tata nei kua āhua pūmau te rahi o te whenua e kākahuria ana ki te wao māori, engari kua nui ake i ētahi rohe, kua iti iho i ētahi. Ko te nuinga o ngā pūnaha hauropi onge, kei te noho mōrearea. Nā te korenga o ētahi nōhanga me te taenga mai o ētahi konihi whāngote, kua kaha heke ngā taupori o te maha atu o ngā momo manu, mokomoko, tipu ahurei. Ko ētahi kei te korokoro tonu o te parata, ko ētahi e nui ana te tūpono ka noho mōrearea. Ahakoa panoni iti ki te taiao, he pānga nui pea tōna ki ngā pūnaha hauropi me ngā momo, otirā ki tō tātou noho ora.

Kāore i tua atu i te wai māori (e tohua ana e Waiti) e noho ora ai tātou, mā roto mai i te hauora tonu, i te tuakiri ahurea, i te mahi kai me ngā mahi pārekareka. Kua hē ō tātou mātapuna wai māori i ngā whenua kua rerekē i ngā mahi a te tangata. I runga i ngā ia o te rua tekau tau ka taha, kua heke te rahi o te hauota me te pūtūtaewhetū i ngā wai o ngā awa i ētahi wāhi, engari kua piki i ētahi atu. Kei te ngaro haere tonu ētahi pūnaha hauropi i ngā repo, ahakoa ngā mahi nui a ētahi ki te whakaora ake i ngā repo.

He takoha anō tā te taiao ki tai (e tohua ana e Waitā) ki te oranga o te tangata, mā roto i te horanga o te kai, i ngā mahi pārekareka me ngā mātauranga ā-iwi e pā ana ki te whakatere waka i te aumoana. Kei te panoni te kounga o ngā wai o te takutai; e taurangi ana ngā ia mō te wāhi ki ngā parahanga tāiora, parataiao, ā, me kōrero anō te pānga o ngā para kirihou ki ngā tini a Tangaroa. Nā te āhuarangi hurihuri, kua piki haere te waikawa o ngā moana, kua mahana ake hoki te mata o te wai; haere he reanga, haere he reanga, ka ngau tonu ngā pānga o ēnei āhuatanga ki ngā pūnaha hauropi ki tai.

Mō te wāhi ki te ua me te hukapapa (e tohua ana e Waipunarangi), kei te panoni ngā taura ua. I te haere kōtui o tērā ki te piki haere o te paemahana, kua noho mōrearea te ōhanga ahuhenua, ngā pūnaha hauropi māori, ngā tikanga Māori, ā, kua pā hoki he kino ki te hauora taha wairua, taha hinengaro. Kei te auau ake te pā o te tauraki poto ki ētahi wāhi, ā, e hoki haere ana ngā awa kōpaka.

Ko te hau takiwā, ngā hau a Tāwhiri me te rangi (e tohua ana e Ururangi) e whakaatu ana i te pānga mai o te kounga o te hau takiwā me ngā ritenga e pā ana ki te mātautanga o ngā hau a Tāwhiri me te rangi ki tō tātou noho ora. Kei te āta piki haere te pai o te hau takiwā huri noa i Aotearoa, engari i ētahi wāhi inea ai te parakino, i ōna wā anō, mō te nuinga o ngā parakino ā-hau, kei runga ake te nui o te parakino i tērā i aratohua e te World Health Organisation i te 2021. Arā hoki te parakino ā-aho o ngā tāone he whakararu tāna i ētahi momo māori (pērā i te wētā), he whakararu hoki i te kitenga atu o ngā whetū. Ā, ko tētahi puna ora mō ētahi tāngata, ko te whirinaki ki te rangi pō hei kaitohu, hei kaiārahi, hei whakanui anō hoki i a Matariki. Ko te aro nui ki te rangi ka pō ana tētahi tino wheako o tāua te tangata, e hua mai ai he painga taha hinengaro, e mārama ake ai te tangata ki te pikaunga kei runga i a ia ki te tiaki i te taiao.

► Te titiro ki tua

Mā te mārama ki ngā ia kei tua e pūmau ai te hauora o te taiao me ngā whakatupuranga kei tua

Mā te aro ki ngā rā e heke mai nei (e tohua ana e Hiwa-i-te-rangi) e tautohua ai ngā whakatatara maha tērā ka pā mai ki te noho ora o ngā reanga o nāiane me ō muri ake. Koia ētahi, ko ngā pānga ki te āhuarangi hurihuri, ki te tupu o te taupori, ko ngā tūraru o te takuhe taha kai, taha wai, me ngā raru tērā ka pā ki ngā pūnaha hauropi. He matatini ngā whakatatara kei mua i te aroaro; tē mōhiotia ka pēhea rawa te tatūnga, ka mutu, ko ētahi, e kore e taea e tātou te āta whakarerekē.

► Kia pai ake ngā whakataau mō te taiao

Mā te hanga pūnaha ruarangi hei aroturuki, hei pūrongo i te taiao, ka tautokona ngā whakataau me ngā mahi a ngā tāngata o Aotearoa

Kua tūtohi te Kaikomihana Pāremata mō te Taiao me whakapai ake te haere kōtui o te taiao me te oranga tuku iho i roto i ngā kaupapa-here. Hei te takanga o te wā, me kuhu he moni, me rangahau, me rite tonu anō hoki te komo atu i te whakaaro auaha, hei whakatupu i te mātauranga e pā ana ki ēnei āhuatanga.

Ko tā te pūrongo nei, he whakamāmā i te whakawhitinga ki tētahi pūnaha pūrongo hou e kaha ake ai te āhei ki te waihanga i te anamata e wawatatia ana e tātou mō tātou anō, otirā mō ngā uri whakaheke.

► Ngā hono ki ngā kōrero raraunga hou katoa

Ngā tohuine kua whakahoutia mō Taiao Aotearoa 2022

- [Annual glacier ice volumes](#)
- [Extinction threat to indigenous freshwater species](#)
- [Extinction threat to indigenous land species](#)
- [Extinction threat to indigenous marine species](#)
- [Lake water quality](#)
- [River water quality: clarity and turbidity](#)
- [River water quality: Escherichia coli](#)
- [River water quality: macroinvertebrate community index](#)
- [River water quality: nitrogen](#)
- [River water quality: phosphorous](#)
- [Wetland area](#)

► Te Kāhui o Matariki

Ko te uru whetū tēnei ka ara tahi i te pae hei tohu i te tau hou.



WAIPUNARANGI



URURANGI



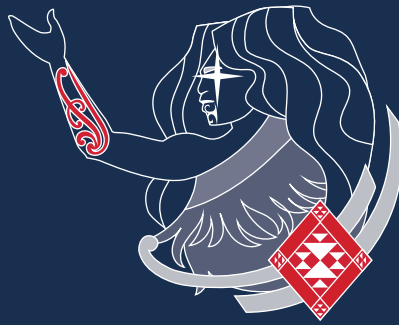
TUPUĀRANGI



HIWA-I-TE-RANGI



WAITĪ



MATARIKI

Ko ia te whetū waengapū, ko ia anō te whaea o ērā atu. Māna e ara ngātahi ai te katoa hei tohu i te tau hou. Ko Matariki te tohu o te noho ora.



WAITĀ



PŌHUTUKAWA



TUPUĀNUKU



PŌHUTUKAWA

E tohu ana i te hunga kua mate mai i te Matariki o mua atu. He akiaki tā Pōhutukawa i a tātou kia huritao ki te tau kua hipa.

TUPUĀNUKU RĀUA KO TUPUĀRANGI

Ko Tupuānuku te tohu o ngā kai ka whakatupuria ki roto tonu i te whenua. Ko Tupuārangi te tohu o ngā kai ka tupu i runga ake o te whenua me te rangi, pērā i te hua rākau me te manu.

WAITĪ

E tohu ana i te wai māori me te tini o ngā mea ora ka noho ki te awa, ki te roto, ki te kōawa, ki te repo.

WAITĀ

E tohu ana i te aumoana me ngā tini kai ka kohia ki tai.

WAIPUNARANGI RĀUA KO URURANGI

Ko Waipunarangi e tohu ana i te ua, arā, i te wai ka puna i te rangi. Ko Ururangi e tohu ana i ngā hau. Mā tōna āhua e tohu ka pēhea rā ngā hau o te tau.

HIWA-I-TE-RANGI

E tohu ana i ngā awhero mō te tau hou. Ko ia te pōtiki o te whānau.



► Pōhutukawa

Mā te huritao ki ngā mea kua riro, ka mārama ake te ara ki tua.



He nui ake i te 80%
o te whenua i kapi i te wao māori i mua i te taenga mai o te tangata. I te 2018, kua heke tēnei ki te 27%.

E 81 neke atu 81
ngā momo o te ao tūroa i korehāhā i te taenga mai o te tangata. E 62 ngā momo manu i ngaro.

He nui ake i te 80
ngā momo rāwaho i kawea mai e te tangata, ka rarau te noho, i raru ai ngā pūnaha hauropi taketake o Aotearoa.

PŌHUTUKAWA
Kia ara a Matariki, ka whakanuia ērā kua riro. Ko Pōhutukawa e tohu ana i te hunga mate. Ko tāna, he akiaki i a tātou kia huritao, kia mihi hoki i ērā i whai wāhi mai ki ō tātou oranga i a rātou e ora ana.

Te huri haere o te āhuarangi

Te toro haere o ngā tāone

Te korenga o ngā pūnaha hauropi me ngā nōhanga

Ngā karinga whakakore repo

Ngā momo urutomo
Ka whakataetae ngā momo rāwaho ki ngā momo māori, ka kainga hoki ngā momo māori e ngā rāwaho.

Te toro o ngā tāone ki ngā whenua haumako, e nekehia ai ngā mahi ahuwheua, ahumāra ki ngā whenua kāore i tino haumako.

Ka ngāhorohoro te whenua

Ngā parakino

Ka uru ngā parakino o ā tātou mahi ki te hau, ki ngā wai, ki te whenua.

Ngā wai rere noa me te whakapākekatanga

Te panoni me te ngoto ake o te whakamahinga whenua

Te whakamahinga me te rahunga o ngā rawa māori

Kua kore i whāia ngā ia māori

Te whakapākekatanga

Mātāwainuku

Kia huritaongia ā tātou panonitanga i te taiao me ngā mea kua ngaro, me whiriwhiri he aha kē hei takoha mā tātou ki te taiao, me pēhea hoki tātou e ako ai i ngā mahi o mua.

Ngā pānga tāpiri me ngā pānga tuku iho

Ka huihui, ka rea hoki ngā kino i te takanga o te wā. E hono tahi ana ngā koko katoa o te taiao. Kia pā he rerekētanga ki tētahi wāhi, tērā ka toro ngā pānga ki ngā wāhi katoa.

► Tō tātou whenua me te kanorau koiora

E hono pū ana ō tātou oneone me ō tātou ngahere ki te tuakiri o ngāi Aotearoa, otirā ki tō tātou hauora, ki te ōhanga, me tō tātou oranga whānui.

He momo kua whatungarogaro

He pūnaha hauropi onge kua mōrearea

HE PĀNGA Ō Ā TĀTOU MAHI KI TE KANORAU KOIORA KI UTA

Kua mōrearea, kua paheke ngā momo māori me ngā pūnaha hauropi māori, me te aha, kua iti ake tō tātou āhei ki te hono ki ēnei mea. Ka ngau kino anō tēnei ki te hauora, ki ngā ara hoki e whiwhi moni ai te tangata.

Kua rerekē te āhuarangi

Te hikoi roa i te taiao

E hono pū ana te takoto o te whenua, ngā manu, ngā ngārara me ngā tipu māori ki te tuakiri o ngāi Aotearoa.

TUPUĀRANGI

E tohu ana i ngā ngahere me ngā kai tupu noa, pērā i te ngārara, i te tipu, i te manu.

Te tuangahere me te whakakapi ki te rākau rāwaho

Te mātaki manu

Ngā ritenga tuku iho

Te whakatupu kai

Ko ngā ngahere māori o ēnei rā, he haururu noa o te rahinga o mua

Ka riro ngā oneone me ngā whenua haumako

Te ngāhorohoro o te whenua

Te horapa o ngā tāone

Waimarie ana a Aotearoa i ōna oneone māori e tautoko ana i ngā mahi ahuhenua me ētahi atu mahi whakatupu kai.

I te tuhene o te oneone, te taiora me ngā tāhawa, ka raru ngā taiao ki uta, ki tai.

HE PĀNGA TŌ TE ĀHUA O TE WHAKAMAHI WHENUA KI TE KOUNGA ME TE NOHO WĀTEA O TE ONEONE

Nā te ngoto o te whakamahi i te whenua hei whakatupu kai, kua hē te pōareare o te oneone, mātua rā i ngā pāmu miraka kau me ngā pāmu whakatupu kiko kau. He mea nui te pōareare o te oneone mō te tuku hāora ki ngā pakiaka, mō te kawē wai anō hoki i te oneone.

TUPUĀNUKU

E tohu ana i te oneone, tae atu ki ngā kai ka whakatupuria me ngā kai ka tupu noa ki te oneone.



Ngā taiora ka wātea ki ngā tipu

- N Hauota
- P Pūtūtaewhetū
- C Waro

► Tō tātou taiao wai māori

He mea nui mō tō tātou tuakiri ngā hononga ki te wai māori. Engari i ngā wāhi kua rerekē te whenua i ngā mahi a te tangata, kua kino haere ngā awa, ngā roto me ngā wainuku.

NGĀ PAINGA O TE WAI MĀORI HAUORA

He hora nōhanga

Nā ngā taiao wai māori, ko te kai, ko te whakaruru, ko ngā wāhi whakaputa uri, tuku paratau hoki mō ngā manu, ngā hanga tuaiwi-kore, ngā ika me ngā momo e kīia ana he taonga.

Tō tātou ahurea

Ka haere ana tātou ki ngā taiao wai māori ki te pārekareka, ki te mahi kai rānei, ki te tuku mātauranga rānei mō ngā momo noho wai māori e kīia ana he taonga, e hono ana tātou ki a Waiti.

Ka piki te ora

Ka piki te ora, taha tinana, taha hinengaro, taha wairua i te noho tahi, i te noho tata rānei ki te awa, te roto, me te repo.

Te taki i te rere

He tātari nui te repo; māna e tango ngā taiora me te parataiao i te wai, māna e here te waipuke, māna hoki e wawao atu te āhuarangi hurihuri.

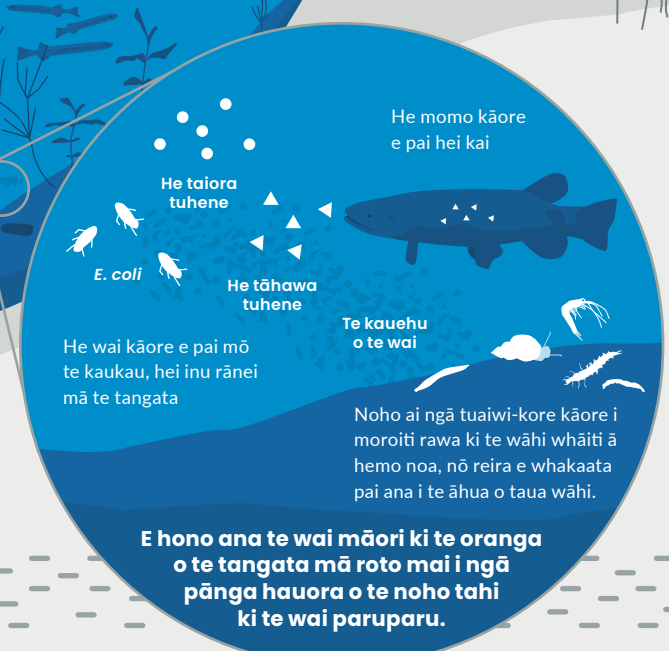
WAITĪ

E tohu ana i te wai māori, i ngā tipu me ērā atu mea ora kei ngā puna, ngā kōawa, ngā awa, ngā roto me ngā repo. Kei runga ake iā i tana tungāne, i a Waitā ko te tai kē tōna nei marae; e whakaata ana i te hononga o ēnei momo wai e rua.

Me mātua whai wai pai te tangata hei inu māna.

Te whakaū i te kārewa wainuku me te whakaora ake i te wainuku.

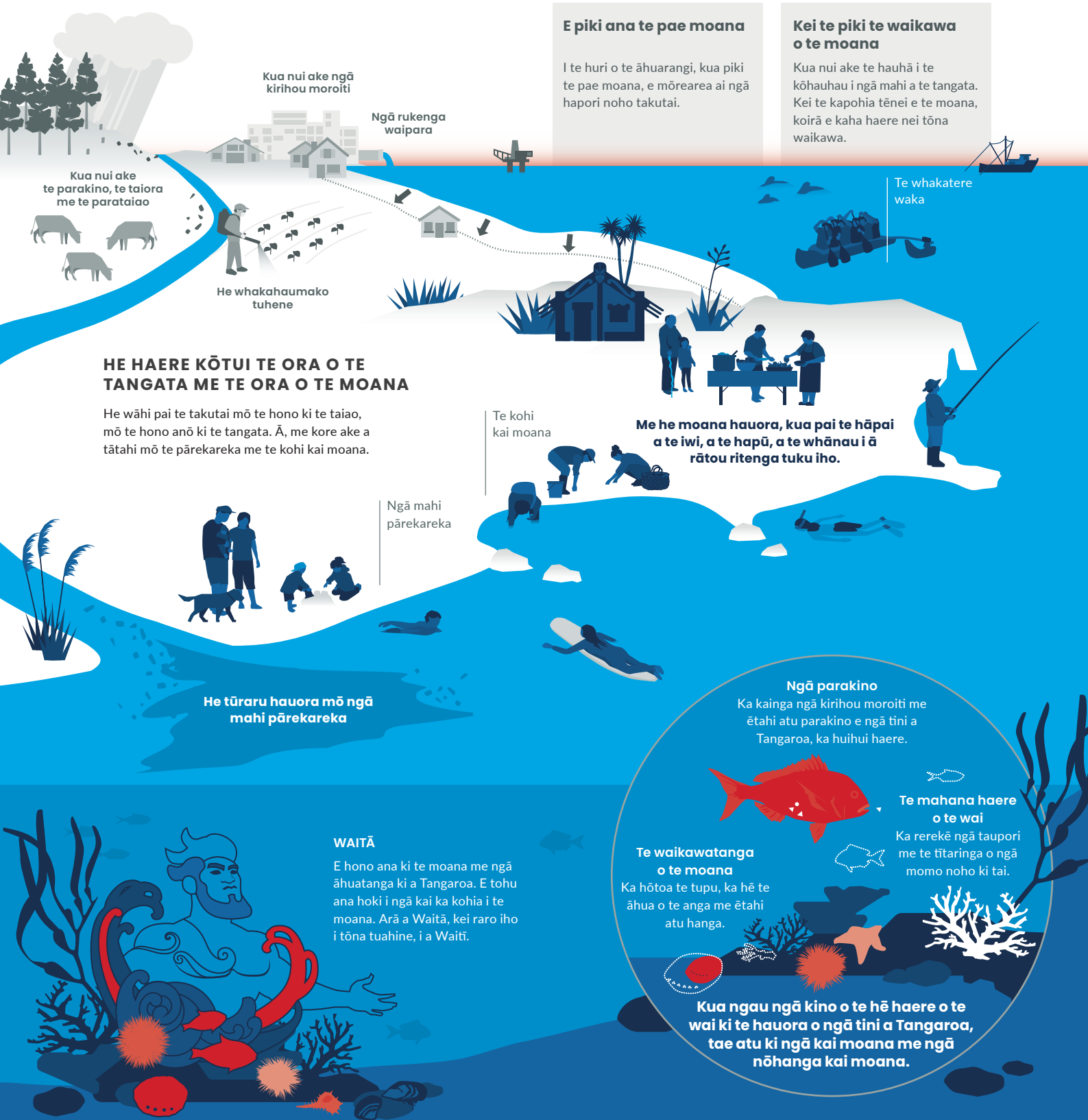
NGĀ PĒHANGA KI NGĀ PŪNAHA HAUOROPI WAI MĀORI



► Tō tātou taiao ki tai

E hono ana te aumoana ki te hauora, ki te tuakiri ā-iwi, me te oranga tinana o te tangata. Ka kino te taiao i ētahi o ā tātou mahi, ā, ka raru ētahi uri o Tangaroa i tēnei āhua.

NGĀ PĒHANGA KI TE TAI AO MOANA



► Te kōhauhau me te āhuarangi

Ko te hau ka uru ki ngā pūkahunahau, ko te rangi e kai nei ngā mata, ko te huarere e wheako nei tātou, ka pā katoa ki te noho ora o te tangata.

URURANGI

E tohu ana i te āhua o ngā hau, o te rangi, me te kōhauhau.

Te whakaterere waka
I ngā mahi whakaterere waka, tātai arorangi, he kaha te hono o Aotearoa ki ngā hau.

WAIPUNARANGI

E tohu ana i ngā ua me ētahi atu āhuatanga o te kōhauhau.

KEI TE PANONI NGĀ TAUIRA UA ME NGĀ TAUIRA HUARERE

Ka rerekē te paemahana me te ua, ā, ka puta he pānga ki te tangata me ngā pūnaha hauropi.

Te mātāi i te rangi

I runga i ōna anō tikanga Māori ko te rangi tonu kei te tohu mai i te wā pai mō te whakatō me te hauhake kai, tae atu ki te mahi manu me te mahi ika.

HAU TAKIWĀ PAI, HAUORA PAI

Kia hē te hau takiwā, tērā e hē ko te hauora tangata. Ko te āhua o te hanga me te whakapau pūngao, me ngā wakakawe, kei te whai pānga ki te kōunga o te hau takiwā.

Tō tātou ahurea

He haere pātui te mahi kai me te huarere, tae atu ki te āhei ki te kōhi tipu mō te rongōā, mō te taputapu, mō te toi, me ngā mahi ōkawa.

Kua nui ake te pāpā mai o te huarere inati

Ka kino te whenua, ngā rawa me ngā tūāhanga

Ka raru ngā mahi whakatupu kai

Ka raru te oranga wairua, hinengaro

He waipuke

Kua koero ngā awa kōpaka

Ngā tūraru hauora

Ka kino te hau takiwā

Ka piki ngā mate pūkahunahau

Ka maha ake ngā mate pāwera

Kei te āta piki te kōunga o te hau takiwā, engari i ētahi wā kei runga ake te nui o te parakino i tā ngā aratohu o tāwāhi e tūtohi mai ana.

Ka raru te tangata me te ōhanga

He hau inati

He tauraki

Kua iti ake ngā rā hukapapa

Kua piki te paemahana

NGĀ PĀNGA KI NGĀ MOMO

Kia rerekē te paemahana me ngā tauira ua, kia ngau te huarere inati, ka nui ake te mōrearea o ngā momo noho taonga, inā hoki ka rerekē te tītaringa, te hurihanga ora me te hekenga.

Ka rerekē te tītaringa me te hurihanga ora o ngā momo