

KEY :

- Investigation Area
- River/Streams/Drains
- RNZAF Base Ohakea Boundary

SOURCE:
Aerial imagery flown 2010/2011 sourced from the LINZ data service
<https://data.linz.govt.nz/layer/1767-manawatu-whanganui-04m-rural-aerial-photos-2010-2011/> and licenced for re-use under the creative commons attribution 3.0 New Zealand licence.
Topographic information supplied by LINZ.

A	ISSUE 1	MAY 19
NO.	REVISION HISTORY	DATE



PROJECT NAME:
**RNZAF BASE OHAKEA
PFAS INVESTIGATION:
COMPREHENSIVE SITE
INVESTIGATION REPORT**

FIGURE TITLE:
INVESTIGATION AREAS

SCALE: 1:40,000 (A3)	FIGURE NO.: 1	ISSUE NO.: A
-------------------------	------------------	-----------------



- KEY :
- Sample types:
- Groundwater
 - ◆ Surface water
 - Soil
 - ▲ Sediment
 - ▭ PFAS Related HAIL Areas (Potential Source)
 - River/Streams/Drains
 - ▭ RNZAF Base Ohakea Boundary

SOURCE:
Aerial imagery flown 2010/2011 sourced from the LINZ data service
<https://data.linz.govt.nz/layer/1767-manawatu-whanganui-04m-rural-aerial-photos-2010-2011/> and licensed for re-use under the creative commons attribution 3.0 New Zealand licence.
Topographic information supplied by LINZ.

NO.	REVISION HISTORY	DATE
A	ISSUE 1	MAR 19



PROJECT NAME:
**RNZAF BASE OHAKEA
PFAS INVESTIGATION:
COMPREHENSIVE SITE
INVESTIGATION REPORT**

FIGURE TITLE:
ON SITE SAMPLE LOCATIONS

SCALE: 1:15,000 (A3)	FIGURE NO.: 2	ISSUE NO.: A
-------------------------	------------------	-----------------



KEY :

Sample Types:

- Groundwater
- ◆ Surface water
- ▲ Sediment
- 🐟 Fish
- ✚ Watercress
- ▭ PFAS Related HAIL Areas (Potential Source)
- River/Streams/Drains
- ▭ RNZAF Base Ohakea Boundary

SOURCE:
Aerial imagery flown 2010/2011 sourced from the LINZ data service
<https://data.linz.govt.nz/layer/1767-manawatu-whanganui-04m-rural-aerial-photos-2010-2011/> and licenced for re-use under the creative commons attribution 3.0 New Zealand licence.
Topographic information supplied by LINZ.

A	ISSUE 1	MAR 19
NO.	REVISION HISTORY	DATE



**RNZAF BASE OHAKEA
PFAS INVESTIGATION:
COMPREHENSIVE SITE
INVESTIGATION REPORT**

FIGURE TITLE:
OFF SITE SAMPLE LOCATIONS

SCALE: 1:40,000 (A3)	FIGURE NO.: 3	ISSUE NO.: A
--------------------------------	-------------------------	------------------------



- KEY :**
- Groundwater
 - Transect Line
 - PFAS Related HAIL Areas (Potential Source)
 - River/Streams/Drains
 - RNZAF Base Ohakea Boundary

SOURCE:
Aerial imagery flown 2010/2011 sourced from the LINZ data service <https://data.linz.govt.nz/layer/1767-manawatu-whanganui-04m-rural-aerial-photos-2010-2011/> and licenced for re-use under the creative commons attribution 3.0 New Zealand licence. Topographic information supplied by LINZ.

A	ISSUE 1	MAR 19
NO.	REVISION HISTORY	DATE

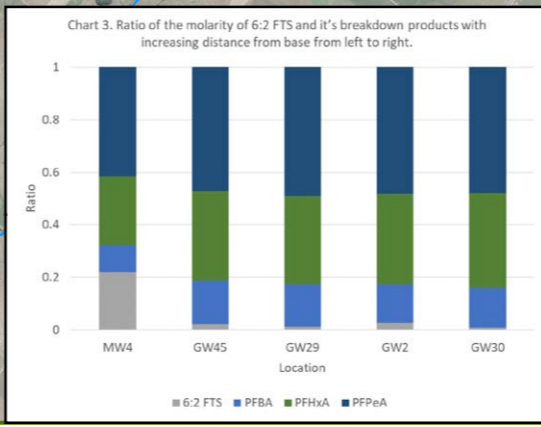
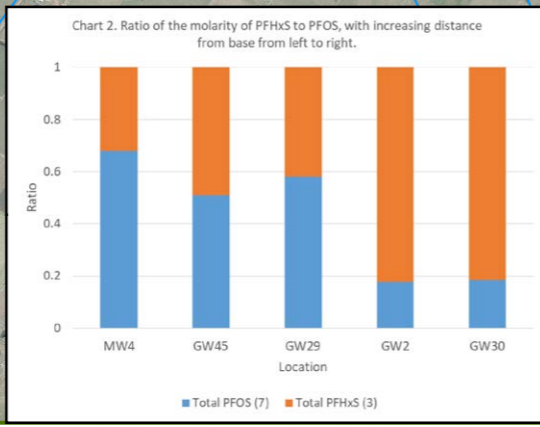
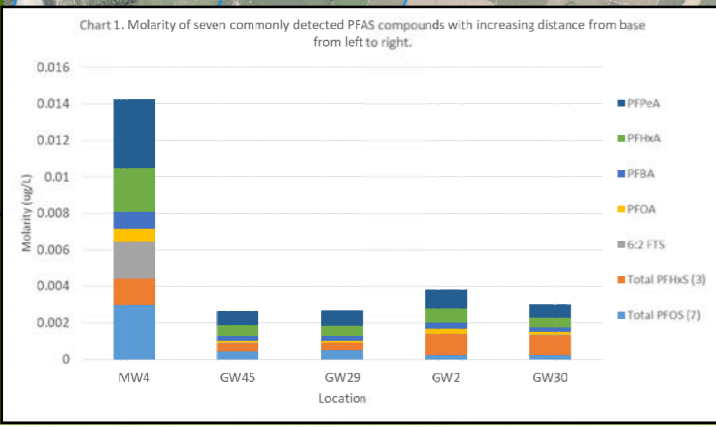


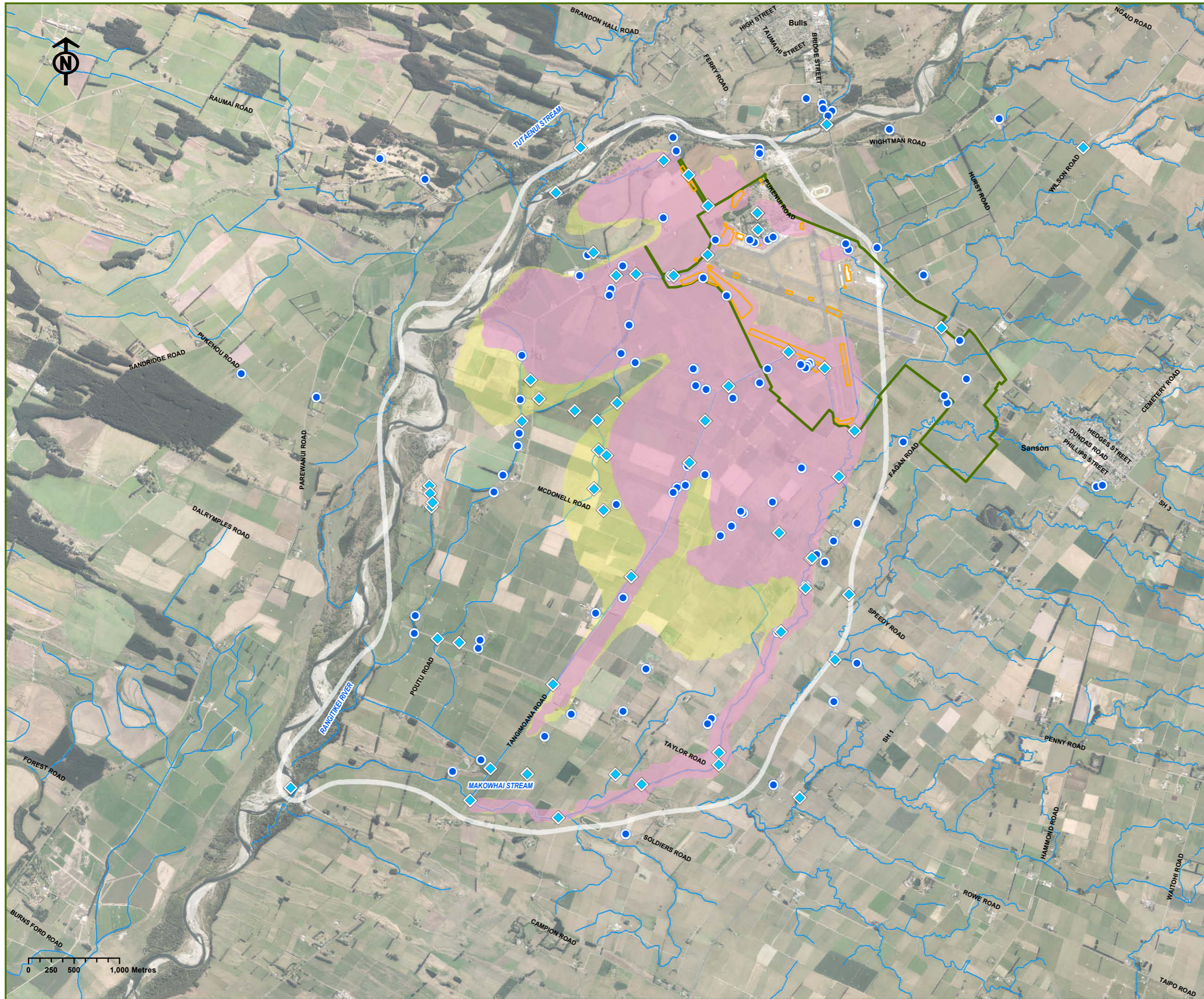
**RNZAF BASE OHAKEA
PFAS INVESTIGATION:
COMPREHENSIVE SITE
INVESTIGATION REPORT**

FIGURE TITLE:

**GROUNDWATER
TRANSECT LOCATION**

SCALE: 1:30,000 (A3)	FIGURE NO.: 4	ISSUE NO.: A
--------------------------------	-------------------------	------------------------





- KEY :**
- Sample Types:**
- Groundwater
 - ◆ Surface water
 - Interpreted Maximum Existing Extent of PFOS+PFHxS Detection (~ 0.001 ug/L)+
 - Plume No Retardation (~ 0.06 ug/L PFOS+PFHxS)
 - Plume With Retardation (~ 0.06 ug/L PFOS+PFHxS)
 - PFAS Related HAIL Areas (Potential Source)
 - River/Streams/Drains
 - RNZAF Base Ohakea Boundary

SOURCE:
 Aerial imagery flown 2010/2011 sourced from the LINZ data service
<https://data.linz.govt.nz/layer/1767-manawatu-whanganui-04m-rural-aerial-photos-2010-2011/> and licenced for re-use under the creative commons attribution 3.0 New Zealand licence.
 Topographic information supplied by LINZ.

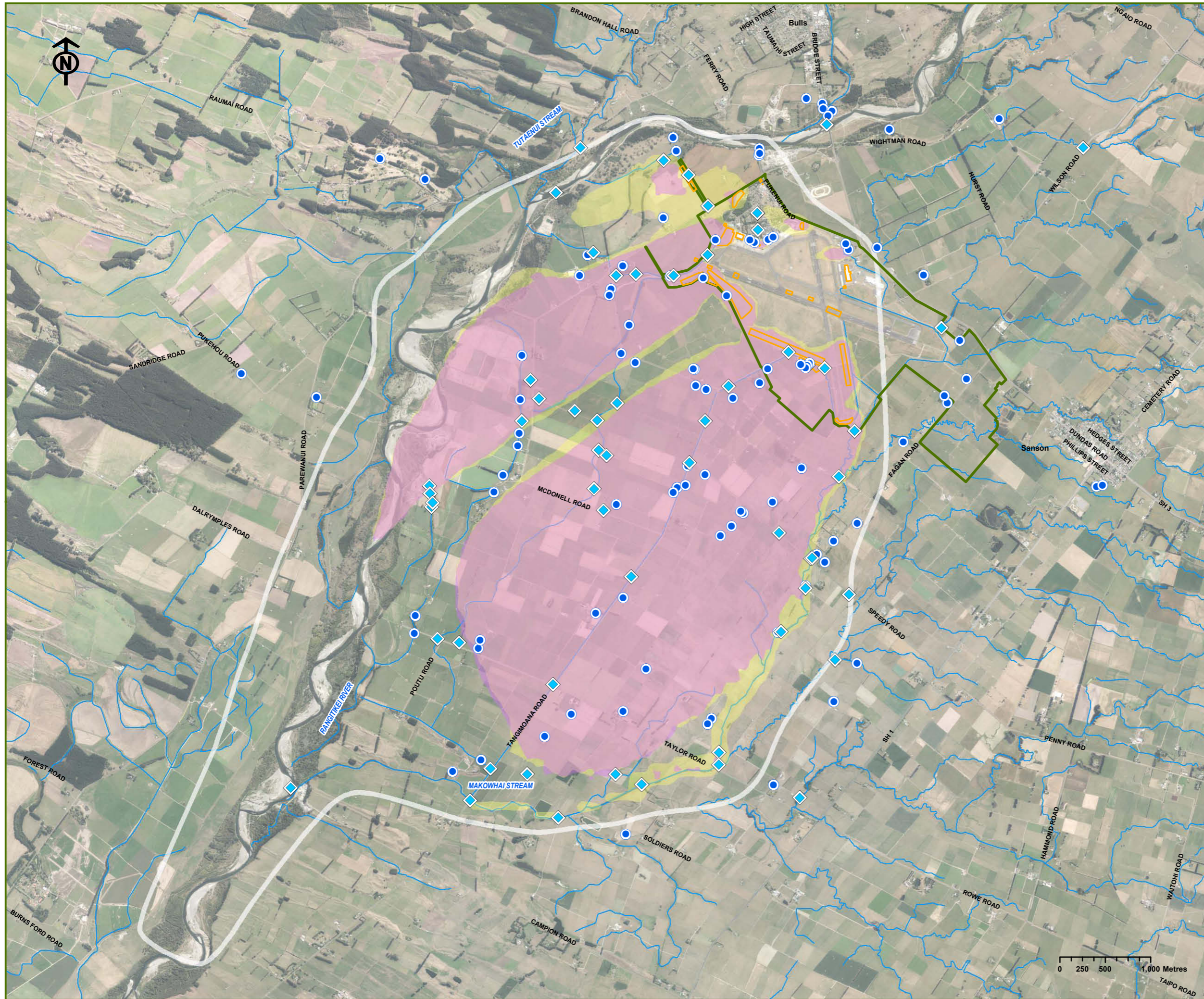
A	ISSUE 1	MAY 19
NO.	REVISION HISTORY	DATE



PROJECT NAME:
 RNZAF BASE OHAKEA
 PFAS INVESTIGATION:
 COMPREHENSIVE SITE
 INVESTIGATION REPORT

FIGURE TITLE:
 EXISTING SHALLOW
 GROUNDWATER
 PFOS+PFHxS
 PLUME ESTIMATE

SCALE: 1:40,000 (A3)	FIGURE NO.: 5	ISSUE NO.: A
--------------------------------	-------------------------	------------------------



- KEY :**
- Sample Types:**
- Groundwater
 - ◆ Surface water
 - Interpreted Maximum Future Extent of PFOS+PFHxS Detection (~0.001 ug/L)
 - Plume No Retardation - Prediction at 25yrs (~0.06 ug/L PFOS+PFHxS)
 - Plume With Retardation - Prediction at 50 yrs (~0.06 ug/L PFOS+PFHxS)
 - PFAS Related HAIL Areas (Potential Source)
 - River/Streams/Drains
 - RNZAF Base Ohakea Boundary

SOURCE:
Aerial imagery flown 2010/2011 sourced from the LINZ data service <https://data.linz.govt.nz/layer/1767-manawatu-whanganui-04m-rural-aerial-photos-2010-2011/> and licenced for re-use under the creative commons attribution 3.0 New Zealand licence. Topographic information supplied by LINZ.

A	ISSUE 1	MAY 19
NO.	REVISION HISTORY	DATE



PROJECT NAME:
RNZAF BASE OHAKEA
PFAS INVESTIGATION:
COMPREHENSIVE SITE
INVESTIGATION REPORT

FIGURE TITLE:
FUTURE SHALLOW
GROUNDWATER
PFOS+PFHxS PLUME
PREDICTION (MAXIMUM EXTENT)

SCALE: 1:40,000 (A3)	FIGURE NO.: 6	ISSUE NO.: A
--------------------------------	-------------------------	------------------------